



Tip5 Polyclonal Antibody

Catalog No	YP-Ab-16781
Isotype	IgG
Reactivity	Human;Rat;Mouse;
Applications	WB;IHC
Gene Name	BAZ2A
Protein Name	Bromodomain adjacent to zinc finger domain protein 2A
Immunogen	The antiserum was produced against synthesized peptide derived from human BAZ2A. AA range:1281-1330
Specificity	Tip5 Polyclonal Antibody detects endogenous levels of Tip5 protein.
Formulation	Liquid in PBS containing 50% glycerol, 0.5% BSA and 0.02% sodium azide.
Source	Polyclonal, Rabbit,IgG
Purification	The antibody was affinity-purified from rabbit antiserum by affinity-chromatography using epitope-specific immunogen.
Dilution	WB 1:500-2000;IHC-p 1:50-300
Concentration	1 mg/ml
Purity	≥90%
Storage Stability	-20°C/1 year
Synonyms	BAZ2A; KIAA0314; TIP5; Bromodomain adjacent to zinc finger domain protein 2A; Transcription termination factor I-interacting protein 5; TTF-I-interacting protein 5; Tip5; hWALp3
Observed Band	210kD
Cell Pathway	Nucleus, nucleolus . Colocalizes with the basal RNA polymerase I transcription factor UBF in the nucleolus. .
Tissue Specificity	Expressed at moderate levels in most tissues analyzed, including heart, brain, placenta, lung, skeletal muscle, kidney and pancreas.
Function	function:May play a role in transcriptional regulation interacting with ISWI. May serve a specific role in maintaining or altering the chromatin structure of the rDNA locus.,PTM:Phosphorylated upon DNA damage, probably by ATM or ATR.,sequence caution:Contaminating sequence. Potential poly-A sequence.,similarity:Belongs to the WAL family.,similarity:Contains 1 bromo domain.,similarity:Contains 1 DDT domain.,similarity:Contains 1 MBD (methyl-CpG-binding) domain.,similarity:Contains 1 PHD-type zinc finger.,similarity:Contains 4 A.T hook DNA-binding domains.,subcellular location:Colocalizes with the basal RNA polymerase I transcription factor UBF in the nucleolus.,subunit:Together with SMARCA5, it forms a complex termed NoRC (nucleolar remodeling complex),,tissue specificity:Expressed at moderate levels in most tissues analyzed, including heart, brain, placenta, lung, skeletal muscle,



kidney

Background

function:May play a role in transcriptional regulation interacting with ISWI. May serve a specific role in maintaining or altering the chromatin structure of the rDNA locus.,PTM:Phosphorylated upon DNA damage, probably by ATM or ATR.,sequence caution:Contaminating sequence. Potential poly-A sequence.,similarity:Belongs to the WAL family.,similarity:Contains 1 bromo domain.,similarity:Contains 1 DDT domain.,similarity:Contains 1 MBD (methyl-CpG-binding) domain.,similarity:Contains 1 PHD-type zinc finger.,similarity:Contains 4 A.T hook DNA-binding domains.,subcellular location:Colocalizes with the basal RNA polymerase I transcription factor UBF in the nucleolus.,subunit:Together with SMARCA5, it forms a complex termed NoRC (nucleolar remodeling complex).,tissue specificity:Expressed at moderate levels in most tissues analyzed, including heart, brain, placenta, lung, skeletal muscle, kidney and pancreas.,

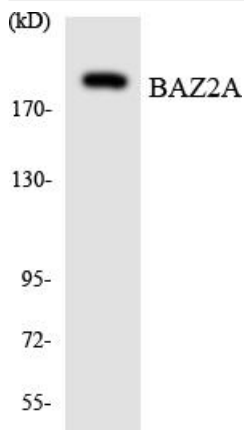
matters needing attention

Avoid repeated freezing and thawing!

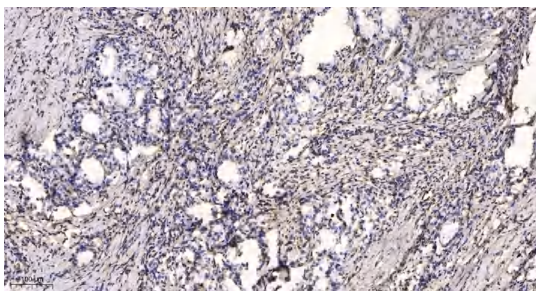
Usage suggestions

This product can be used in immunological reaction related experiments. For more information, please consult technical personnel.

Products Images



Western blot analysis of the lysates from HeLa cells using BAZ2A antibody.



Immunohistochemical analysis of paraffin-embedded human Gastric adenocarcinoma. 1, Antibody was diluted at 1:200(4° overnight). 2, Tris-EDTA,pH9.0 was used for antigen retrieval. 3,Secondary antibody was diluted at 1:200(room temperature, 45min).